



Pilot Data Server Administrator Guide

Version PDS-9.1



Pilot Data Server



Copyright ©2024 Vizrt. All rights reserved.

No part of this software, documentation or publication may be reproduced, transcribed, stored in a retrieval system, translated into any language, computer language, or transmitted in any form or by any means, electronically, mechanically, magnetically, optically, chemically, photocopied, manually, or otherwise, without prior written permission from Vizrt.

Vizrt specifically retains title to all Vizrt software. This software is supplied under a license agreement and may only be installed, used or copied in accordance to that agreement.

Disclaimer

Vizrt provides this publication “as is” without warranty of any kind, either expressed or implied. This publication may contain technical inaccuracies or typographical errors. While every precaution has been taken in the preparation of this document to ensure that it contains accurate and up-to-date information, the publisher and author assume no responsibility for errors or omissions. Nor is any liability assumed for damages resulting from the use of the information contained in this document. Vizrt’s policy is one of continual development, so the content of this document is periodically subject to be modified without notice. These changes will be incorporated in new editions of the publication. Vizrt may make improvements and/or changes in the product(s) and/or the program(s) described in this publication at any time.

Vizrt may have patents or pending patent applications covering subject matters in this document. The furnishing of this document does not give you any license to these patents.

Antivirus

Vizrt does not recommend or test antivirus systems in combination with Vizrt products, as the use of such systems can potentially lead to performance losses. The decision for the use of antivirus software and thus the risk of impairments of the system is solely at the customer's own risk.

There are general best-practice solutions, these include setting the antivirus software to not scan the systems during operating hours and that the Vizrt components, as well as drives on which clips and data are stored, are excluded from their scans (as previously stated, these measures cannot be guaranteed).

Technical Support

For technical support and the latest news of upgrades, documentation, and related products, visit the Vizrt web site at www.vizrt.com.

Created on

2024/07/17

Contents

1	Introduction.....	6
1.1	Pilot Data Server Launcher	6
1.2	Pilot Data Server Service.....	6
1.3	Script Runner Service	6
1.4	Crop Service	7
1.5	Thumbnail Generator	7
1.6	Related Documents	7
1.7	Feedback	7
2	Installation.....	8
2.1	Installation Prerequisites.....	8
2.2	Installing Pilot Data Server	8
2.2.1	ShowEdge Installer.....	9
2.2.2	Scripted Installation	9
2.3	Installing the Thumbnail Generator	10
2.3.1	Silent Installation	10
2.4	Alternative Installations	11
2.5	Firewall Exceptions	11
2.6	Antivirus	11
3	Default Ports and Protocols.....	13
3.1	HTTP	13
3.2	HTTPS.....	14
4	Configuration	16
4.1	Launcher.....	16
4.2	Authentication	18
4.2.1	Roles	18
4.2.2	Identity Configuration.....	18
4.2.3	Newsroom Requirements	24
4.3	Crop Server and Script Runner	25
4.3.1	Configuring Script Runner.....	25
4.3.2	Configuring Crop Server	26
4.4	Licensing	29
4.4.1	Setting Up Licenses.....	29
4.4.2	Configuring Alerts	31

4.5	Log Files	32
4.5.1	Logging Configuration	32
4.6	Pilot Data Server Settings	34
4.6.1	The Settings File	34
4.6.2	The Settings UI	35
4.6.3	Configuring the Pilot Data Server Port	37
4.6.4	Configuring the STOMP Address	37
5	Use Cases	38
6	Web Interface.....	39
6.1	Accessing the Pilot Data Server Web Interface	39
6.2	Service.....	39
6.3	Template Feed	40
6.4	Data Element Feed	40
6.5	Settings	40
6.6	Examples	40
6.7	Documentation	40
7	Setting Parameters.....	41
7.1	Database Parameters	41
7.1.1	Granting Applications Access to Pilot Data Server	41
7.1.2	Granting Applications Access to Preview Server.....	41
7.1.3	Granting Applications Access to Update Service	42
7.1.4	Setting Database Parameters for Crop Service	42
7.1.5	Enabling Built-in Object Store Search.....	42
7.1.6	Configuring Order Management.....	42
7.2	Search Providers	43
7.2.1	Configuring Search Providers (Viz One)	44
7.2.2	Configuring Search Providers (RestVOS)	45
7.2.3	Authentication for Feed Browser	45
7.3	Tags Settings	46
7.3.1	Accessing Tags Settings.....	46
7.3.2	Tags Settings Functions	47
7.4	Database Parameters	48
7.4.1	Viz Pilot Database Parameters.....	48
8	RestVOS.....	53
8.1	Comparing RestVOS and Conventional VOS Access	53
8.2	Advantages of RestVOS.....	53

9	Change Notifications	54
9.1	REST API	54
9.2	STOMP API	54
10	Proxy Support	55
10.1	Redundancy and Failover	55
10.1.1	Load Balancer Quick Setup.....	55
11	MOS XML	57
11.1	Graphics with No Timing Info.....	57
11.2	Graphics with Timing Info.....	57
11.3	Videos	58
11.4	Stillstore Images	58
11.5	Overriding MOS XML Values	58

1 Introduction

Pilot Data Server is installed as an application layer on top of the Viz Pilot database, and acts as an application server for accessing Viz Pilot's database and other services, and enables the use of features including Crop Service, Template Tagging, Update Service, Person Search, search on Viz One, Thumbnail Generator and Timeline Editor in Viz Pilot workflows.

It has a web interface with a REST API, accessible for 3rd party integrations. Pilot Data Server is required when using Graphic Hub as the Viz Pilot database, and for integrating with Viz Story, Viz Pilot Edge and Template Builder.

The full Pilot Data Server system contains the following parts:

Type	Component
Application	Pilot Data Server Launcher
Services	Vizrt Pilot Data Server Vizrt Script Runner Vizrt Crop Service Vizrt Thumbnail Generator

1.1 Pilot Data Server Launcher

The Pilot Data Server Launcher is a separate application that can be used to configure, start and stop the Pilot Data Server service.

1.2 Pilot Data Server Service

The Pilot Data Server service is the main module of this system. It provides a REST API for web applications to access the Pilot database, and it has a changelog event mechanism for broadcasting changes to templates, elements and concepts inside the database.

1.3 Script Runner Service

The [Script Runner Service](#) comes packaged with Pilot Data Server and is automatically installed. It can be configured, started and stopped with the Pilot Data Server Launcher. The Script Runner Service provides a simple way for users to use the Media Sequencer's *Live Update* mechanism without needing to create a custom service. The Script Runner acts as an External Update Service for Media Sequencer. See Update Script Editor in the [Viz Pilot User Guide](#).

1.4 Crop Service

The Crop Service provides a way to crop images. The Crop Service is provided in a separate installer. It can be installed and run on the same physical host as Pilot Data Server. If installed on the same host, it can be configured, started and stopped through the Pilot Data Server Launcher.

1.5 Thumbnail Generator

Thumbnail Generator is a Windows service that automatically generates thumbnails of data elements when they are created or changed. The thumbnails are stored in the Viz Pilot database. Thumbnail Generator requires a Preview Server, which is used to serve the thumbnails in the data element feed.

1.6 Related Documents

The [Viz Pilot User Guide](#) provides complete documentation of the Viz Pilot system. For more information and documentation for all Vizrt products, please visit:

- www.vizrt.com
 - [Vizrt Documentation Center](#)
 - [Viz University](#)
 - [Vizrt Forum](#)
-

1.7 Feedback

We welcome your feedback and suggestions regarding Vizrt products and this documentation. Please contact your local Vizrt customer support team at <http://www.vizrt.com>.

2 Installation

This section covers:

- [Installation Prerequisites](#)
- [Installing Pilot Data Server](#)
 - [ShowEdge Installer](#)
 - [Scripted Installation](#)
- [Installing the Thumbnail Generator](#)
 - [Silent Installation](#)
- [Alternative Installations](#)
- [Firewall Exceptions](#)
- [Antivirus](#)

2.1 Installation Prerequisites

- Visual C++ Redistributable Packages for Visual Studio 2015

The packages are included in the Pilot Data Server bundle installer, and can also be found on Microsoft's website.

2.2 Installing Pilot Data Server

There are two options to install Pilot Data Server:

- Use the bundle installer: *PilotDataServerBundleInstaller-x64-[version].exe*, or
- The MSI installer: *PilotDataServerInstaller-x64-[version].msi*.

Installer	Content
Bundle installer	Pilot Data Server Visual Studio C++ 2015 redistributable Codemeter runtime
MSI	Pilot Data Server Thumbnail Generator Service (optional)

To install with a UI, double click one of these installers and follow the on-screen instructions.

 **Note:** The default location is *%ProgramFiles%\Vizrt\Pilot Data Server*.

2.2.1 ShowEdge Installer

The ShowEdge installer is not bundled into the Pilot Data Server installer, nor into the Viz Pilot Edge installer, it has been available from the Pilot Data Server end point `/showedge`. To still be able to serve out the ShowEdge installer from this end point, the file `ShowEdge.[version].exe` needs to be downloaded from the FTP, and copied to the `app/showedgeinstaller` folder of the Pilot Data Server installation (for example, to `C:\Program Files\Vizrt\Pilot Data Server\app\showedgeinstaller`).

2.2.2 Scripted Installation

For a scripted installation, Pilot Data Server can be installed without using the installer GUI. This can be done with the MSI installer found on the Vizrt's FTP, or extracted from the bundle installer with the `-msi` command line option.

⚠ Note: For silent install, the step for configuring the license is skipped. The license configuration of Pilot Data Server is stored at `%ProgramData%\Vizrt\Pilot Data Server\licenses.json`, and the file itself can be copied from one installation to another as a way to apply known license configurations without using the GUI.

In a command shell, run the following command:

```
msiexec /i VizrtPilotDataServer-x64-x.x.x.x-Release.msi /quiet
```

If required to set properties for the silent installer for the base url, use the following MSI properties:

Property	Example value
BASE_URL	https://myserver.com:443/pds
BASE_PATH	pds
SECURE_PORT	7373
CONNECTION_METHOD	GH or ORACLE
ORACLE_USERNAME	pilot
ORACLE_PASSWORD	pilot
ORACLE_DATA_SOURCE	localhost/vizrtdb

Property	Example value
GH_HOST	localhost
GH_PORT	19398
GH_USER_ID	Admin
GH_PASSWORD	VizrtDb123
FORCELAUNCHER	true or false
INSTALLDIR	"c:\\Program Files\\Vizrt\\Pilot Data Server"

Examples

```
msiexec /i <application.msi> CONNECTION_METHOD="ORACLE" ORACLE_USERNAME="pilot"
ORACLE_PASSWORD="pilot" ORACLE_DATA_SOURCE="hostname/vizrtdb" BASE_PATH="pds" /log
install.log
msiexec /i <application.msi> CONNECTION_METHOD="GH" GH_HOST="hostname" GH_PORT="19398
" GH_USER_ID="admin" GH_PASSWORD="some password123" BASE_URL="https://something.com/
pds" SECURE_PORT="7373" /log install.log
```

2.3 Installing The Thumbnail Generator

The Thumbnail Generator (see the [Viz Pilot User Guide](#)) can be installed as an optional component during the Pilot Data Server installation. The option for Thumbnail Generator installation is disabled by default. To install it, select the Thumbnail Generator manually when installing Pilot Data Server through the MSI installer.

2.3.1 Silent Installation

Since the Thumbnail Generator is not installed by default, the `INSTALLLEVEL=2` needs to be added to the command string for the Thumbnail Generator to be included during a silent Pilot Data Server installation:

```
msiexec /i VizrtPilotDataServer-x64-x.x.x.x-Release.msi INSTALLLEVEL=2 /quiet
```

To upgrade an existing Pilot Data Server to include the Thumbnail Generator without uninstalling it, the following command needs to be run:

```
msiexec /i VizrtPilotDataServer-x64-x.x.x.x-Release.msi  
ADDLOCAL=ThumbnailGeneratorService /quiet
```

2.4 Alternative Installations

- If **Crop Service** installation is required (see the relevant section in the Installation chapter in the [Viz Pilot User Guide](#)), it must be installed separately, after Pilot Data Server.
 - If support for **multiple Viz Pilot Database schemas** is required, *separate* Pilot Data Servers must be installed on *separate* machines.
-

2.5 Firewall Exceptions

For Pilot Data Server to be accessible from other machines, Windows firewall exceptions are required. Pilot Data Server adds the following inbound rules to the Windows firewall during installation:

Allow connections on port:

- 8177 - Pilot Data Server HTTP port
- 7373 - Pilot Data Server HTTPS port
- 9876 - STOMP event notifications port
- 1981 - Script Runner HTTP port
- 1982 - for Pilot Script Runner HTTPS port

These ports are the recommended ports for the service. They are removed when Pilot Data Server is uninstalled.

2.6 Antivirus

Vizrt does not recommend or test antivirus systems in combination with Vizrt products, as the use of such systems can potentially lead to performance losses. The decision for the use of antivirus software and thus the risk of impairments of the system is solely at the customer's own risk.

There are general best-practice solutions, these include setting the antivirus software to not scan the systems during operating hours and that the Vizrt components, as well as drives on which clips and data are stored, are excluded from their scans (as previously stated, these measures cannot be guaranteed).

A list of services and folders which should be excluded from scanning can be found below:

Services:

- vizrt_crop_server
- VizrtMist
- vizrt_pilot_data_server
- vizrt_script_runner
- vizrt_thumbnail_generator

Folder:

- *C:\Program Files (x86)\Vizrt*
- *C:\ProgramData\vizrt*
- *C:\Program Files\Vizrt*

Processes:

- PilotCropServiceHost.exe
- PilotDataServerHostService.exe
- PilotScriptRunnerHostService.exe
- PilotThumbnailGeneratorHostService.exe
- caddy-service.exe
- caddy.exe

3 Default Ports And Protocols

The table below shows all of the default Protocols and Ports used with Pilot Data Server.

3.1 HTTP

Name	Default Value	Comments
Pilot Data Server	http://pds-host:8177	The port used for HTTP is configurable in the <i>DataServerConfig.ini</i> file on <i>%ProgramData%\Vizrt\Pilot Data Server</i> .
Script Runner	http://pds-host:1981	Installed with Pilot Data Server and runs on the same host machine. The port used for HTTP is configurable in the file <i>PilotScriptRunnerHostService.exe.config</i> in the Pilot Data Server installation folder.
Crop Service	http://pds-host:8178	Separate installer that normally runs on the same host as Pilot Data Server. The port used for HTTP is configurable in the file <i>PilotCropServiceHost.exe.config</i> in the Crop Service installation folder.
Graphic Hub REST	http://gh-host:19398	Graphic Hub uses the same port for HTTP and HTTPS.
Viz One	http://vize-host:80/thirdparty	
Preview Server	http://ps-host:21098	
REST VOS / GH Image Extension	http://imex-host:19390/restvos/service	The image extension UI can be accessed on <i>http://imex-host:19390/imagelibrary/index.html</i> .
Viz Pilot Preview Port	50008	Viz Engine preview port used for snapshot previews in Viz Pilot.
Viz Arc MOS Panel	http://arc-host:9004/mos-plugin	

Name	Default Value	Comments
PDS changelog notifications	stomp://pds-host:9876/?destination=/changelog&lastKnownId=-1	

3.2 HTTPS

Name	Default Value	Comments
Pilot Data Server	https://pds-host:7373	The port used for HTTPS is configurable from the Pilot Data Server Launcher. The service needs to restart.
Script Runner	https://pds-host:1982	The port used for HTTPS is configurable from the Pilot Data Server Launcher. The service needs to restart.
Crop Service	https://pds-host:8179	The port used for HTTPS is configurable from the Pilot Data Server Launcher. The service needs to restart.
Graphic Hub REST	https://gh-host:19398	Graphic Hub uses the same port for HTTP and HTTPS.
Viz One	https://vize-host.example.com:443/thirdparty	
Preview Server	https://ps-host:4443	
REST VOS / GH Image Extension		No support for HTTPS.
Viz Pilot Preview Port	50008	Viz Engine preview port used for snapshot previews in Viz Pilot.
Viz Arc MOS panel	https://arc-host:9005/mos-plugin	

Name	Default Value	Comments
PDS changelog notifications	stomp://pds-host:9876/? destination= changelog&lastKnownId=-1	

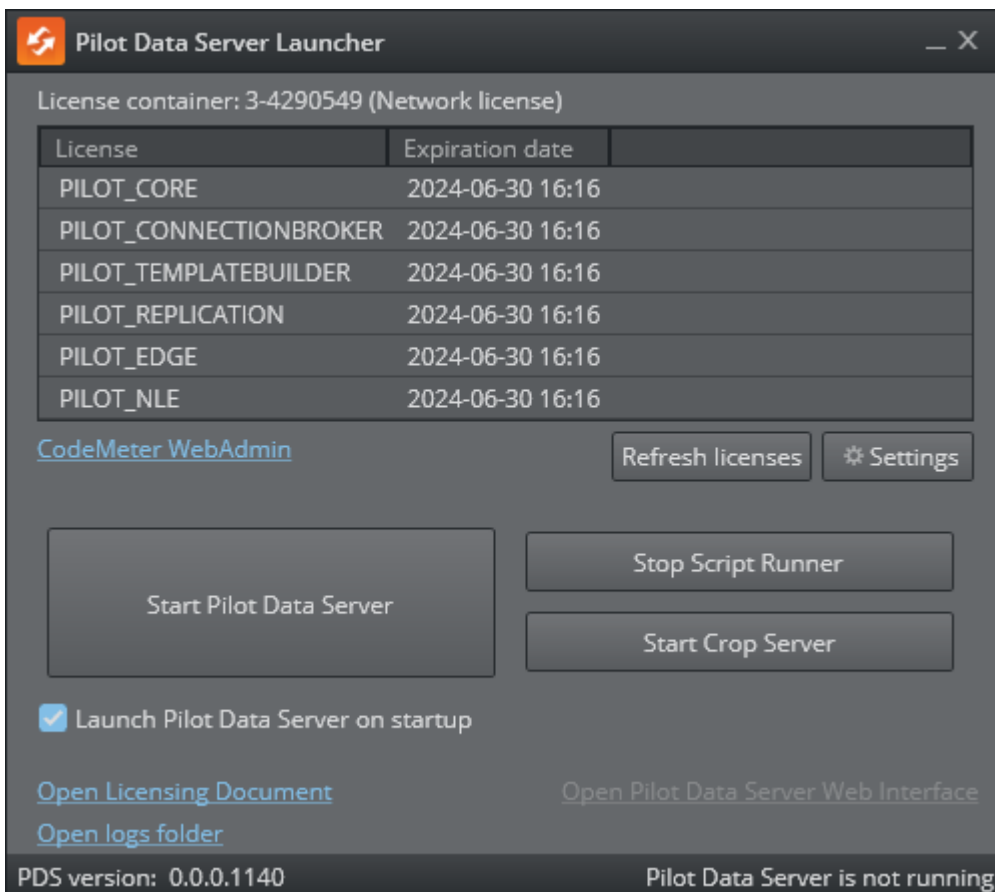
4 Configuration

This section covers the following topics:

- [Authentication](#)
- [Crop Server and Script Runner](#)
- [Licensing](#)
- [Log Files](#)
- [Pilot Data Server Settings](#)

4.1 Launcher

The Pilot Data Server Launcher is a minimal dashboard for starting and stopping services, and also offers a UI to change configuration.




The Pilot Data Server Launcher works partly as a minimal dashboard to start and stop services, but most importantly as an UI to configure different aspects of the system.

These are the main functions:

- **Currently activated licenses:** This list contains the currently activated licenses on the license server/container.

- **Refresh licenses:** Reconnects to the license system and does another attempt to fetch the current licenses.
- **Settings:** Opens the settings page.
- **CodeMeter WebAdmin:** Open Wibu license administration in a browser. Requires the Codemeter service to run.
- **Start/Stop Pilot Data Server:** Starting and stopping the Vizrt Pilot Data Server service on the computer.
- **Start/Stop Script Runner:** Starting and stopping the Vizrt Pilot Script Runner service on the computer.
- **Start/Stop Crop Server:** Starting and stopping the Vizrt Crop Server service on the computer.
- **Launch Pilot Data Server on startup:** Guarantees the Pilot Data Service and additional services (Crop Server, Script Runner and Thumbnail Generator) are started when the computer is started.
- **Open Licensing Documentation:** Opens the local documentation for configuring the licenses for Pilot Data Server.
- **Open logs folder:** Opens the logs and ini file folder, normally `%ProgramData%\Vizrt\Pilot Data Server`.
- **Open Web Interface:** Opens the web page of the currently running Pilot Data Server.

 **Note:** The Codemeter.exe service of the Wibu Licensing system, must be running in order to start Pilot Data Server.

4.2 Authentication

- [Roles](#)
- [Identity Configuration](#)
 - [Microsoft Entra ID](#)
 - [Vizrt SSO \(Keycloak\)](#)
- [Newsroom Requirements](#)

4.2.1 Roles

Pilot Data Server can be configured to use Authentication to control the access to Viz Pilot Edge, Template Builder and DataServerConfig.

There are 4 different roles defined:

- pilot-journalist
- pilot-editor
- graphic-designer
- pilot-admin

It is important to understand the distinction between roles and groups. Roles are what grants a user privileges, and a role can be assigned to a user directly, or to all members of one or more groups depending on the identity provider being used. The role names are fixed and defined by Vizrt, but you are free to define or reuse groups as you like.

These are the access rights for the different roles:

	Viz Pilot Edge	Template Builder	Data Server Settings
pilot-journalist	✓	✗	✗
pilot-editor	✓	✗	✗
graphic-designer	✓	✓	✗
pilot-admin	✓	✓	✓

4.2.2 Identity Configuration

Pilot Data Server uses the OpenID Connect Protocol (OIDC) to authenticate users. It can, in theory, be configured to integrate with any OIDC compliant identity provider.

The following providers have been tested and are supported:

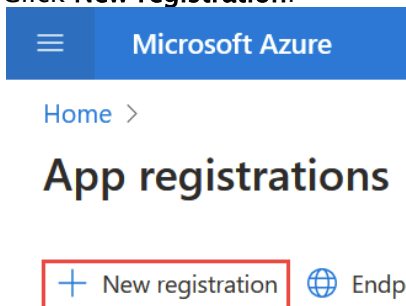
- Microsoft Entra ID (formerly Azure Active Directory)
- Vizrt SSO (Keycloak)

Microsoft Entra ID

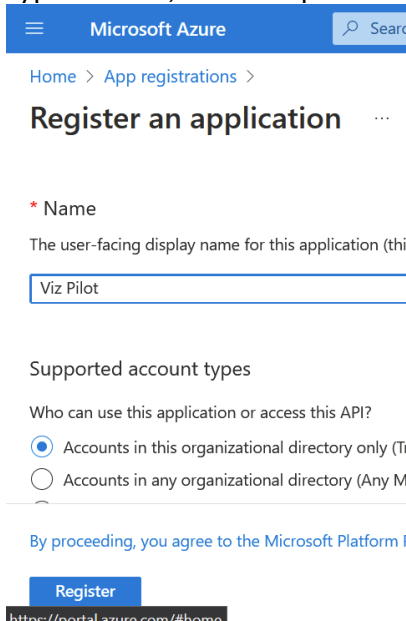
The Entra ID application configuration consists of two parts: an App Registration for the technical details of the application, and an Enterprise Application that defines user and group access and their role assignments, as well as other aspects of how the app integrates with your tenant.

To connect Viz Pilot to Microsoft Azure Entra ID (formerly Azure AD), log in to your tenant in the [Azure Portal](#), then perform the following steps:

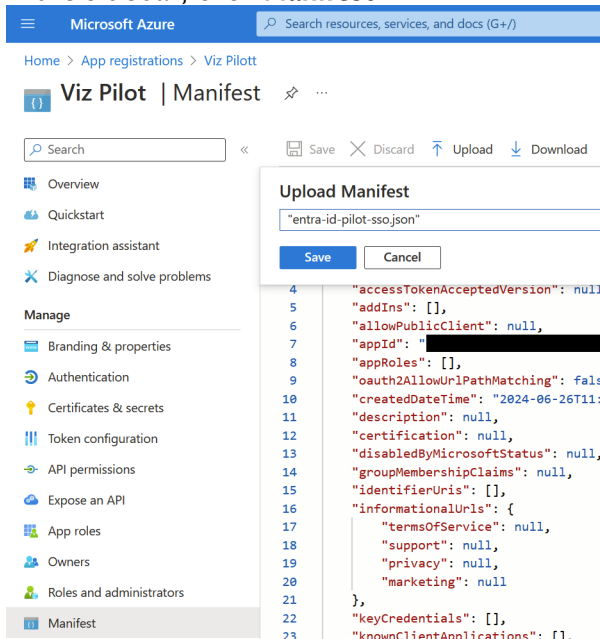
1. Go to the [App Registrations](#) blade.
2. Click **New registration**:



3. Type a name, for example Viz Pilot, and leave the other settings as is. Then click **Register**.

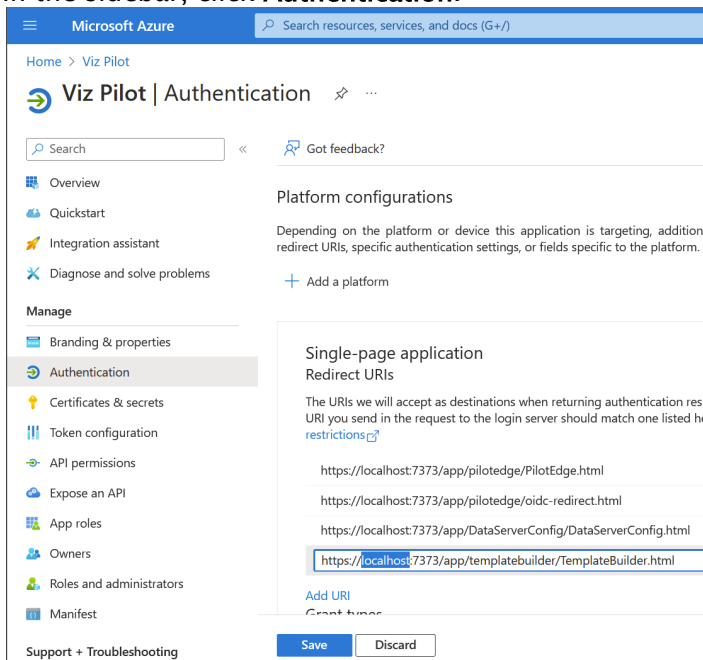


4. In the sidebar, click **Manifest**.



5. Click **Upload**, select the provided JSON file, then click **Save**.

6. In the sidebar, click **Authentication**.

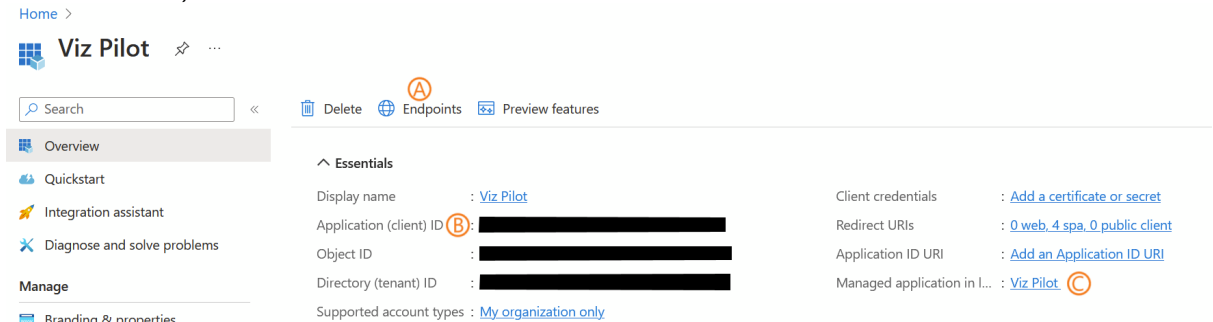


7. Edit the URLs to have the correct hostname, and click **Save**.

Optional:

- a. In the sidebar, click **API permissions**, then click **Grant Admin Consent for <your tenant name>**.
- b. In the sidebar, click **Branding & properties**, then upload the provided logo.
- c. In the sidebar, click **Owners**, then assign yourself and/or other users that should have access to manage this app registration.

8. In the sidebar, click **Overview**:

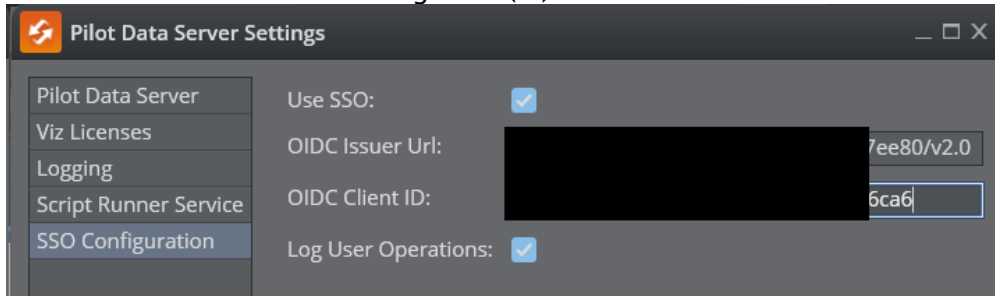


9. Open the Pilot Data Server Launcher, click **Settings** and select the SSO page (or use the notepad to collect the following values for a later entry).

10. Click **Endpoints** (A) and find the **OpenID Connect metadata document** field. Copy the left part up (but not including `/.well-known/openid-configuration`), and paste it into the **OIDC Issuer Url** field in Pilot Data Server Settings.

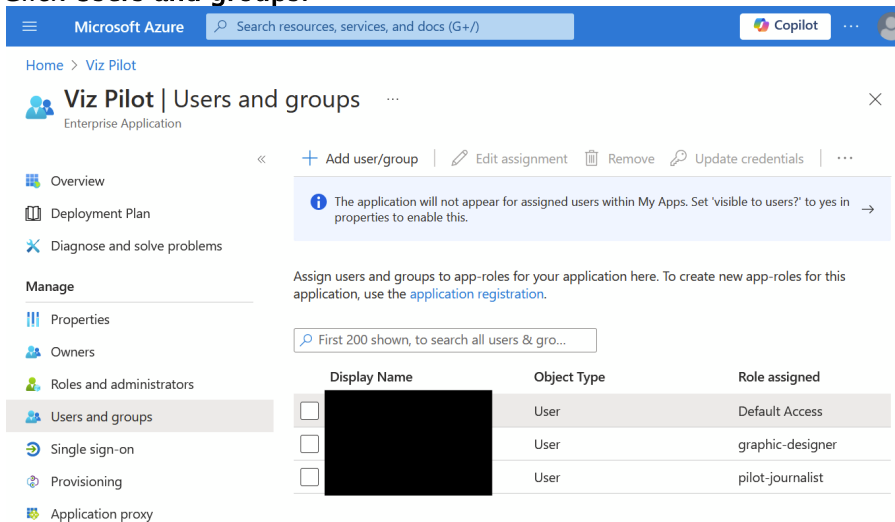
11. Find the **Application (client) ID** (B) value and copy it to the **OIDC Client ID** field in Pilot Data Server Settings.

12. Save the Pilot Data Server Settings and (re)start Pilot Data Server.



13. Click the link with the label **Managed application in local directory** (C), which takes you to the Enterprise Application blade.

14. Click **Users and groups**.



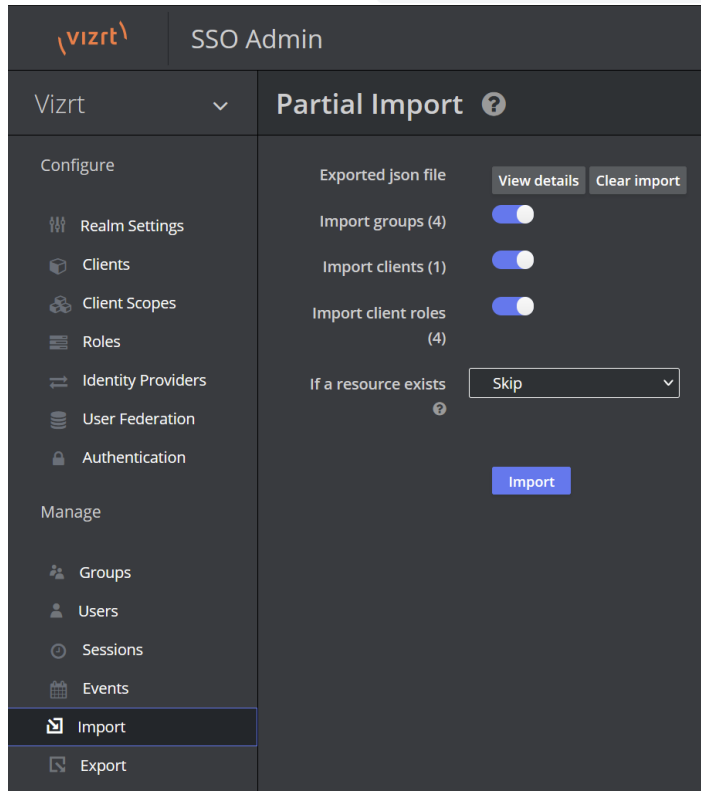
15. Add users and groups to roles as you wish (**Default Access** is added automatically but does not grant access to any Viz Pilot apps, so you may remove it).

16. You may also inspect the other pages in the sidebar to customize behavior and security, and assign other users that should have access to manage this Enterprise Application, as owners. You do not need to perform Provisioning for Viz Pilot.

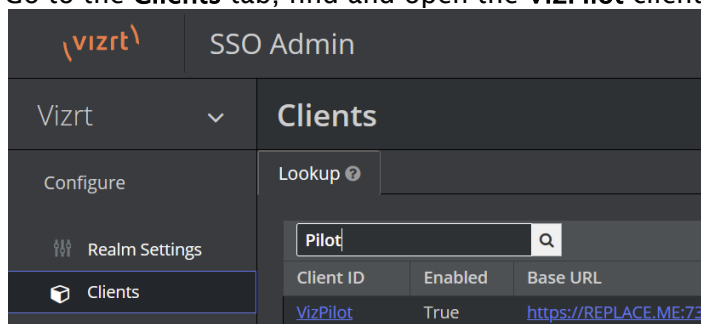
Vizrt SSO (Keycloak)

To connect Viz Pilot to Vizrt SSO running in an existing Viz One deployment, perform the following steps:

1. Download the `keycloak-pilot-ssso.json` file from the same folder that you got the installer on [Vizrt's FTP](#) server.
2. Log in to the Viz One SSO Admin pages, and go to the **Import** tab in the left menu.
3. Click **Select file** and pick the `keycloak-pilot-ssso.json` file.

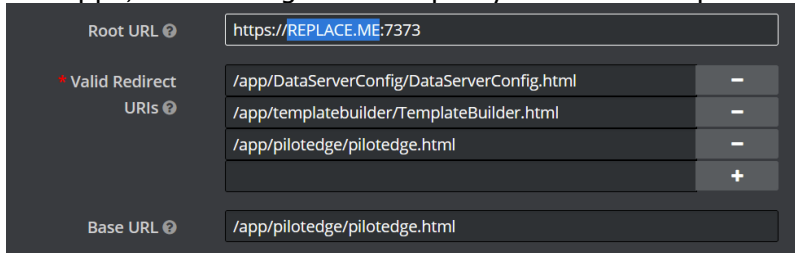


4. Review the options and click **Import** when ready.
5. Go to the **Clients** tab, find and open the **VizPilot** client that was just imported.

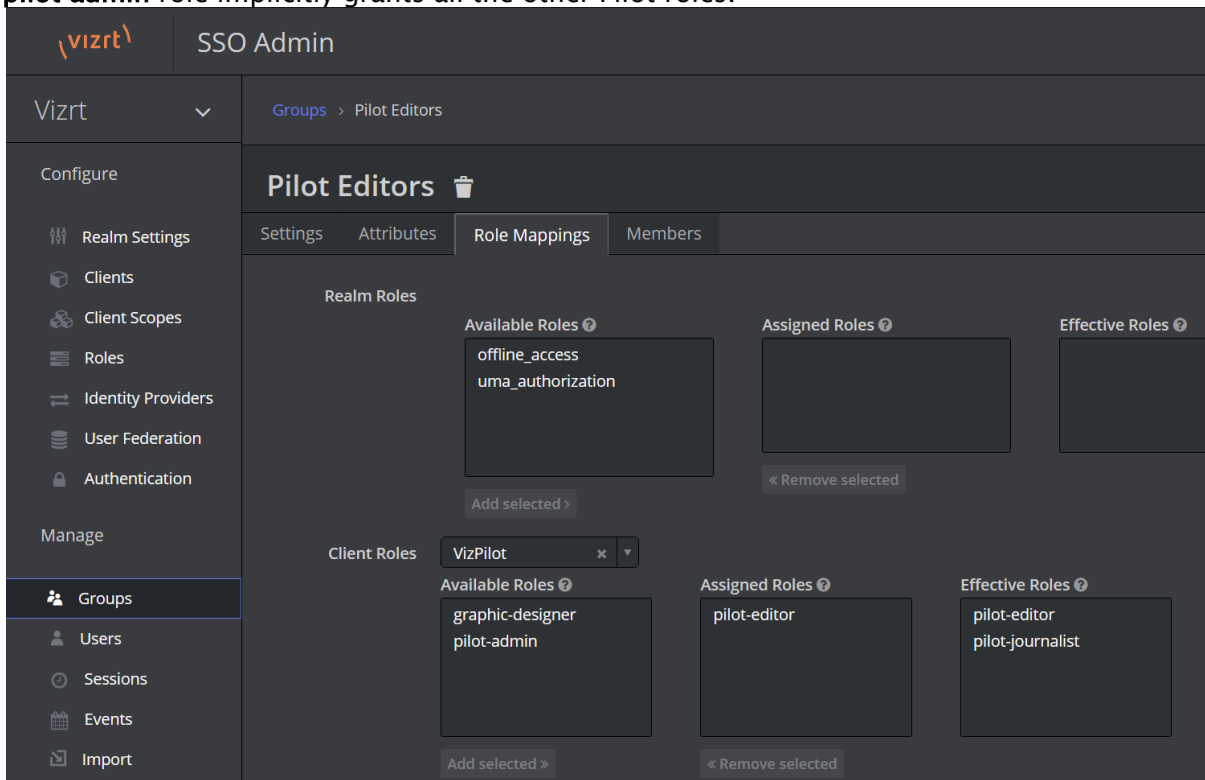


6. Update the Root URL field with the fully-qualified domain name of the Viz Pilot server. Also check and adjust the Valid Redirect URIs in case you have installed multiple versions of the

web apps, or are using a reverse proxy with different path mapping or similar.

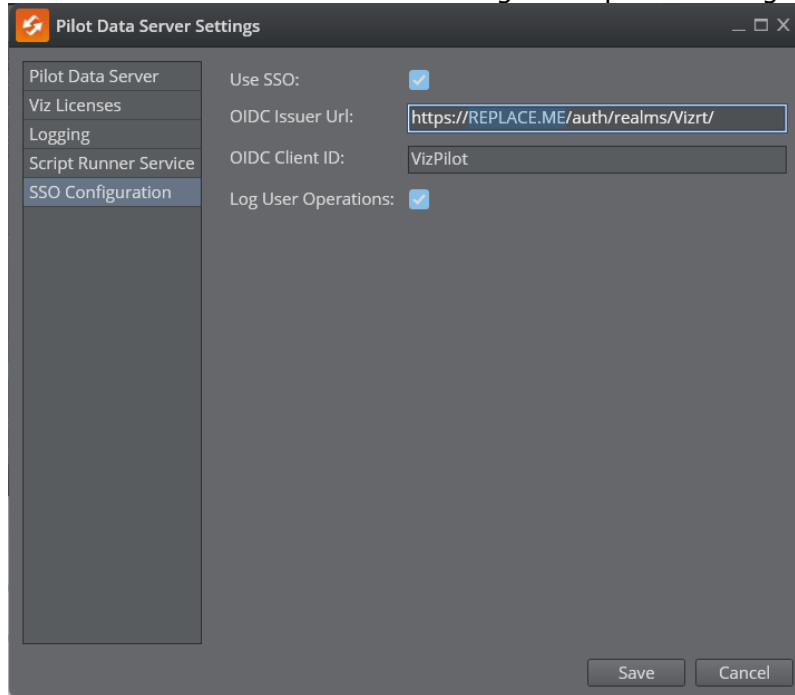


7. Manage users and groups to assign the four Viz Pilot roles as desired. The roles are defined by the **VizPilot** client, as shown in the screenshot below. The imported config includes example groups which you can use as-is, customize, or replace with your own groups. Remember that these groups don't directly grant any privileges, they just assign the corresponding roles to all group members, and it is the roles that grant a user privileges. The **graphic-designer** and **pilot-editor** roles also implicitly grant the **pilot-journalist** role. The **pilot-admin** role implicitly grants all the other Pilot roles.



8. Use the Pilot Data Server Launcher to configure OIDC settings for the target server. The **Issuer Url** is typically the Viz One server's base url followed by `/auth/realms/Vizrt`. The

Client ID should be **VizPilot** when using the imported config.



4.2.3 Newsroom Requirements

The Newsroom system hosts MOS plugins like Viz Pilot Edge in their own web browser environment. This environment must be considered secure by the authentication technology we are using in Viz Pilot Edge.

The following requirements must be met:

1. The newsroom web hosting environment for MOS plugins must communicate over secure socket (using the **HTTPS protocol**). This must be configured in the newsroom system.
2. The web browser hosting the MOS plugin guest must support **popup windows** to allow the login dialog to be displayed.
3. The web browser must support the **SubtleCrypto** web API as specified here: <https://developer.mozilla.org/en-US/docs/Web/API/SubtleCrypto>. All modern browsers support this API, but it may be that the newsroom system still deploys an older browser internally, which can be incompatible with modern authentication technology.

Known limitations per June 2024

- The web browser in **Avid iNEWS** does not support popup windows. To use authentication in iNEWS, the ShowEdge wrapper must be used to host Viz Pilot Edge.

4.3 Crop Server And Script Runner

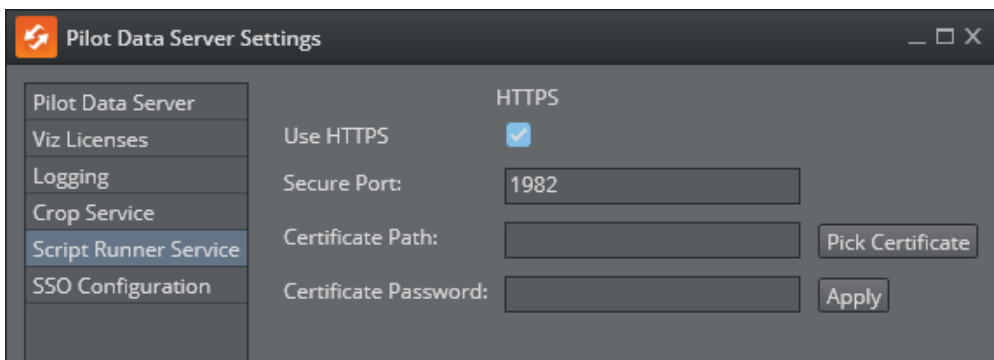
4.3.1 Configuring Script Runner

Script Runner is Viz Pilot's update service that lets you update template data, such as stock values and player statistics, right before going on air.

Note: You can write Visual Basic In Pilot scripts to modify the data, and the scripts run on the Script Runner. It is also possible to create your own external update service. For more information, see *External Update Service* in the Media Sequencer Manual bundled with the software.

Use Secure Communication

Script Runner can be configured to use the SSL transport layer when communicating. Click **Settings** > **Script Runner Service** to enter the configuration UI.



To configure Script Runner for SSL communication:

1. Check **Use HTTPS**.
2. The default port suggested is 1982. This can be changed, but it is recommended to use this port.
3. Configure a certificate by either entering a path to the *.pfx file or picking a certificate from the file system.
4. Enter the certificate password.
5. Click **Apply** to register the certificate information.
6. Click **Save**.
7. Restart the Script Runner Service.

Server Certificates and PFX Files

A server certificate, typically issued by a trusted Certificate Authority (CA), contains the server's public key and identifying information. Adding a certificate for Script Runner or Crop Service is done by importing a PFX file. PFX (Personal Information Exchange) file, also known as PKCS#12. A PFX file consolidates the server certificate, its private key, and any intermediate and root certificates into a single, secure, password-protected file.

Note: Viz Pilot and Media Sequencer with an Oracle backend, do not support Script Runner on HTTPS.

Configure the HTTP port

The Script Runner uses port 1981 by default for HTTP. To change the port:

1. On the Pilot Data Server machine, open the configuration file in a text editor:
`%ProgramFiles%\vizrt\Data Server\PilotScriptRunnerHostService.exe.config`.
2. Change the port by modifying the following line:

```
<setting name="DefaultPort" serializeAs="String">  
  <value>1981</value>  
</setting>
```

3. Save the file.
4. Restart the **Vizrt Script Runner** service from the Windows Services window.

4.3.2 Configuring Crop Server

Vizrt Crop Server is a service that makes it possible to crop images on-the-fly. It is provided in a separate installer, but if installed on the same machine as Pilot Data Server, the Launcher settings can be used to configure secure communication (HTTPS) for the Crop Server.

Use Secure Communication

Crop Server can be configured to use the SSL transport layer when communicating. Click **Settings > Crop Service** to enter the configuration UI.

Pilot Data Server Settings

HTTPS

Use HTTPS

Secure Port:

Certificate Path:

Certificate Password:

PILOT DATA SERVER CONNECTION

Pilot Data Server URL:

PROXY

Base Path:

To configure Crop Service for SSL communication:

1. Check **Use HTTPS**.
2. The default port suggested is 8179. This can be changed, but it is recommended to use this port.
3. Configure a certificate by either entering a path to the *.pfx file or picking a certificate from the file system.
4. Enter the certificate password.
5. Click **Apply** to register the certificate information.
6. The Pilot Data Server URL should point to where the service document of Pilot Data Server is expected to be. For a HTTPS setup this would normally be `https://localhost/7373`.
7. Click **Save**.
8. Restart the Crop Service.

Proxy

If Crop Service is placed behind a reverse proxy like Caddy or HAProxy, the base path must be configured to match the sub path of the proxy URL. For instance, if the crop service is served out under the proxy address <https://proxy.com:443/vizrt/cropserver>, then the base path should be set to `vizrt/cropserver`. Proxy protocol, host and port are transported through HTTP headers, but base path must be explicitly configured.

Pilot Database Settings

In the Pilot Database settings, the **crop_service_uri** should point to the machine on which you installed Pilot Data Server: *http://< cropservicehostname >: 8178/*.

Optional: Set the **croptool_max_image_area** to adjust the maximum size of a cropped image that is served by Pilot Data Server. If the image size is larger than **croptool_max_image_area**, then the image is resized while still respecting the aspect ratio of the crop. The maximum image size applies even if no cropping is done.

Image size = image width x height in pixels.

Configure the HTTP Port

The Crop Service uses port 8178 by default for HTTP. To change the port:

1. On the Crop Service machine, open the configuration file in a text editor: *%ProgramFiles%\vizrt\Crop Service\PilotCropServiceHostService.exe.config*.
2. Change the port by modifying the following line:

```
<setting name="DefaultPort" serializeAs="String">  
  <value>8178</value>  
</setting>
```

3. Save the file.
4. Restart the **Vizrt Crop Server** service from the Windows Services window.

4.4 Licensing

Licenses in Pilot Data Server are managed by using WIBU Systems. This manages the use of PDS, Viz Pilot Edge, Template Builder and Viz Pilot Edge through the NLE plugins.

WIBU works through the CodeMeter application, therefore, it is required to be installed in the same machine as Pilot Data Server (it is not necessary to have CodeMeter installed in the same machine as Viz Pilot Edge, Template Builder or the graphic plugins).

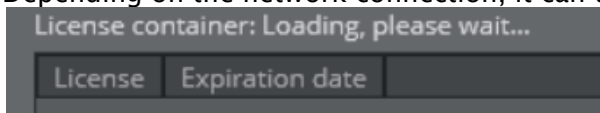
The CodeMeter local installation may have the WIBU containers set up or they can be connected to another CodeMeter license server. Please read the [Viz Licensing documentation](#) on how to set up CodeMeter containers.

Note: The Codemeter.exe service of the Wibu Licensing system, must be running in order to start Pilot Data Server.

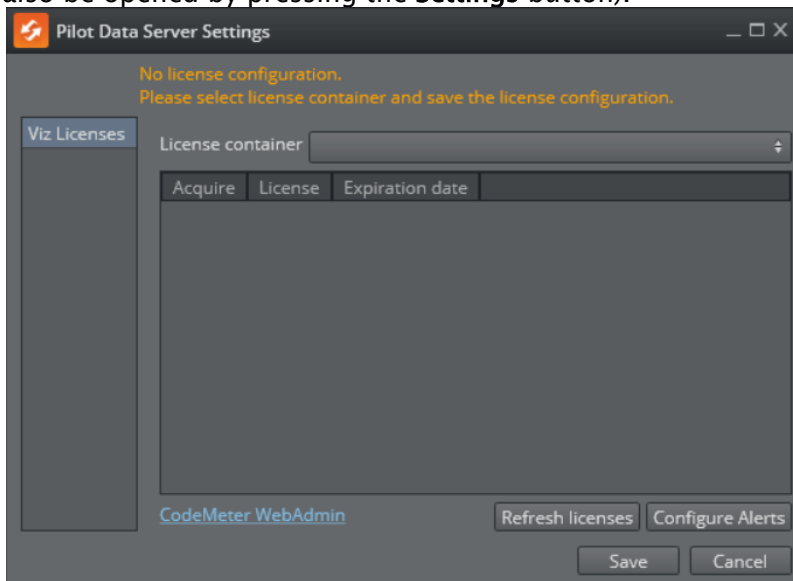
- [Setting Up Licenses](#)
- [Configuring Alerts](#)
 - [Configuring SMTP Alert](#)

4.4.1 Setting Up Licenses

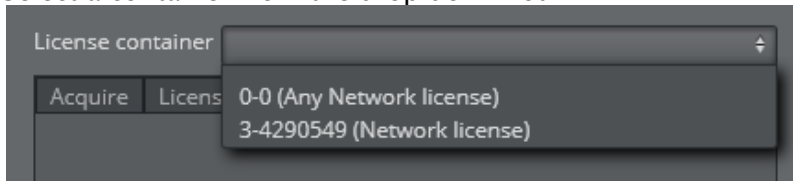
1. After starting Pilot Data Server launcher, it will try to connect to a valid CodeMeter server. Depending on the network connection, it can take a while.



2. If there are no settings saved in the local machine, a new window will open (this window can also be opened by pressing the **Settings** button).

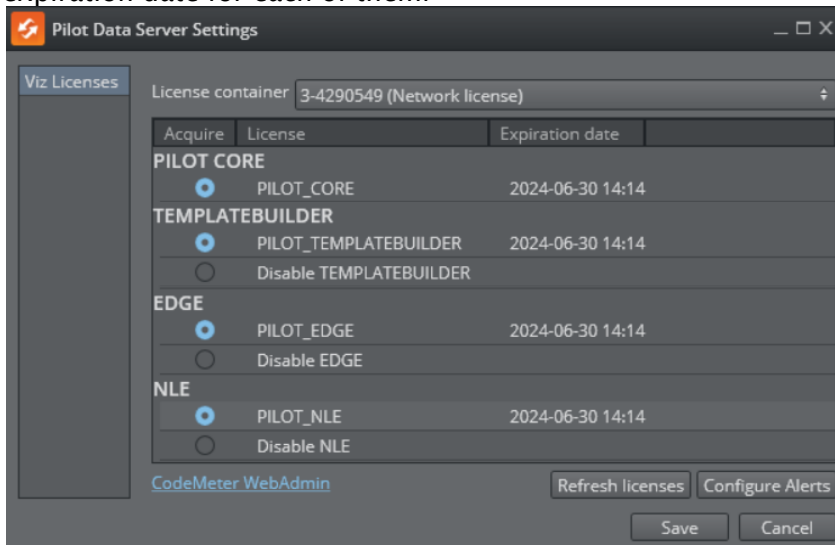


3. Select a container from the drop down list:



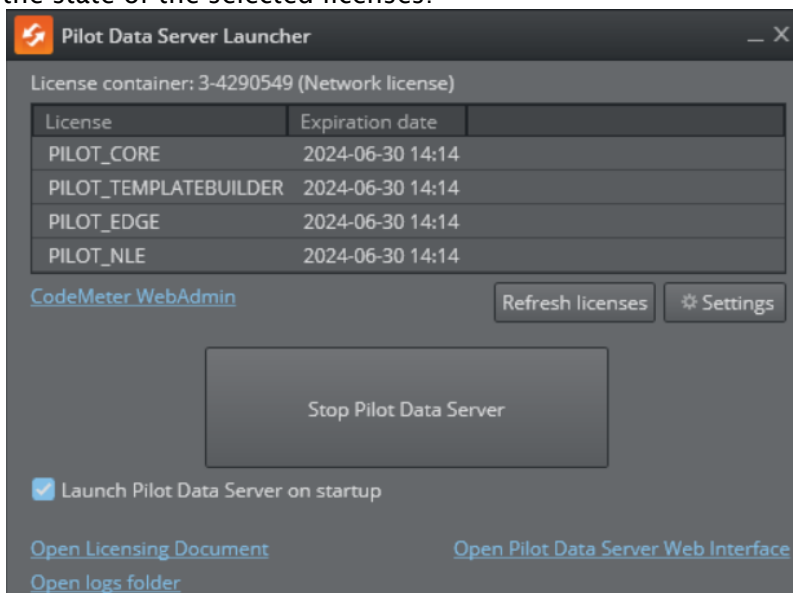
If no containers are available, press the link for CodeMeter WebAdmin at the bottom left of the window to open the CodeMeter administration page. After solving any issues on CodeMeter, you can press the **Refresh Licenses** button.

4. When a valid container is set, a list of licenses will appear with the available licenses and the expiration date for each of them:



The *PILOT_CORE* license is for PDS and it is mandatory. The remaining licenses can be enabled or disabled manually.

5. After selecting the licenses, click **Save** to go back to the initial window. This window shows the state of the selected licenses:



- Click **Launch as Windows Service** to launch PDS. To start PDS at system startup, tick the **Launch on system startup** box.

4.4.2 Configuring Alerts

When PDS is running, alerts about license expiration can be configured by clicking on the **Configure Alerts** button from the MSE launcher. The PDS license alerter can be configured to either send email with SMTP, or to send journal messages via the Graphic Hub. There is a 7 days grace period on expiry of the PDS license.

Configuring SMTP Alert

To configure email alerts about license expiration, select **SMTP Server** from the **Notification type** dropdown, and configure the SMTP server settings.

Enable Email Alerts: Option to use email alerts when license is expiring.

Notification type: Only SMTP email configuration is possible.

Server: SMTP server to use.

User: SMTP server user.

Password: SMTP server password.

Use SSL: Check if your server uses SSL, otherwise leave unchecked.

Port: SMTP server port.

Email Author: Email account which will be sending the email (usually user must have account permissions with this account).

Email Recipients: Email account that will receive the alert email.

When finished, press the **Save** button.

4.5 Log Files

Script Runner, Crop Service and Pilot Data Server services logs to different files.

Service	Log file path	Configurable
Pilot Data Server	%ProgramData%\Vizrt\Logs\PilotDataServer\server.log	Log file size and log level can be configured in the Launcher UI. The configuration is written to <i>PilotDataServerHostService.exe.config</i> in the installation path.
Crop Service	%ProgramData%\Vizrt\Logs\CropService\cropservice.log	Log file size and log level can be configured in <i>PilotCropServiceHost.exe.config</i> in the installation path.
Script Runner	%ProgramData%\Vizrt\Logs\ScriptRunner\scriptrunner.log	Log file size and log level can be configured in <i>PilotScriptRunnerHostService.exe.config</i> in the installation path.

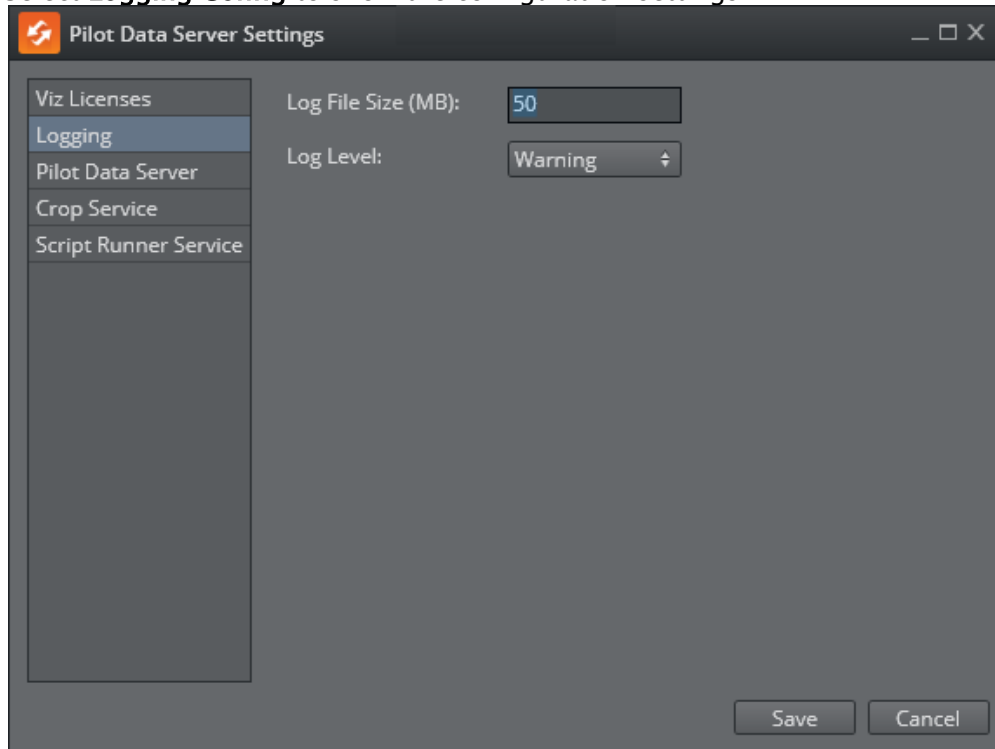
Note: The maximum default size of the log is 100Mb, with one active file and one *.old* file.

4.5.1 Logging Configuration

The configuration of Logging for Pilot Data Server is done using the Pilot Data Server Launcher.

1. On the initial window of the launcher, click the **Settings**  button.

2. Select **Logging Config** to show the configuration settings.



Log File Size: Defines the maximum file size for log files (in mb) for PDS. When the size is exceeded, a new file is created in the same folder.

Log Level:

- Debug:** Log message for debug purposes.
- Info:** Log for general messages, for example "Connected to host", etc.
- Warning:** Log message for irregular situations that may cause unexpected results.
- Error:** Used for serious and unexpected errors, that may cause situations with unwanted results.

Info: Each log level, logs all of the messages of the level below. Therefore, debug logs all of the messages while the error level only logs errors.

3. After configuring, click **Save**.



Warning: Clicking **Save** applies changes to all settings in this window, including logging, licensing, PDS, etc.

4.6 Pilot Data Server Settings

- [The Settings File](#)
- [The Settings UI](#)
 - [Secure Communication](#)
 - [Server Certificates and PFX Files](#)
 - [Proxy](#)
 - [Database Connection](#)
 - [Graphic Hub](#)
 - [Oracle](#)
- [Configuring the Pilot Data Server Port](#)
- [Configuring the STOMP Address](#)
 - [Changing the STOMP Address](#)

4.6.1 The Settings File

Most of the Pilot Data Server settings are stored in a single file: `%ProgramData%\Vizrt\Pilot Data Server\DataServerConfig.ini`.

This file is the backing for most of the settings in the Launcher Settings. This file can be manipulated without the Launcher running, but the Pilot Data Server service needs to restart if the settings are changed in the file. This file can also be copied to a target machine to pre-configure Pilot Data Server without entering the UI.

4.6.2 The Settings UI

Secure Communication

Pilot Data Server can be configured to use the SSL transport layer when communicating. If HTTPS is configured, all endpoints of Pilot Data Server can be accessed using the HTTPS protocol.

1. Check **Use HTTPS**.
2. The default port suggested is 7373. This can be changed, but it is recommended to use this port.
3. Configure a certificate by either entering a path to the *.PFX file or picking a certificate from the file system.
4. Enter the certificate password.
5. Click **Apply** to register the certificate information.
6. Click **Save**.
7. Restart Pilot Data Server.

Note:

- Search providers and Preview Server must also be in HTTPS environments in order for calls to them work. To enable support for HTTPS requests for Preview Server, see the [Preview Server Administrator Guide](#).

- If necessary to clear the HTTPS port configured using the Pilot Data Server Launcher (Pilot Data Server, Script Runner, Crop Server), it is required to manually clear them from the sslcert and urlacl lists as in the following examples:
 - netsh http delete sslcert ipport=0.0.0.0:7373
 - netsh http delete urlacl <https://+:7373/>


Server Certificates and PFX Files

A server certificate, typically issued by a trusted Certificate Authority (CA), contains the server's public key and identifying information. Adding a certificate for Pilot Data Server is done by importing a PFX file . PFX (Personal Information Exchange) file, also known as PKCS#12. A PFX file consolidates the server certificate, its private key, and any intermediate and root certificates into a single, secure, password-protected file.

Proxy

Pilot Data Server can be installed along with a proxy/reverse-proxy server.

- **BasePath:** The purpose of a URL path prefix is to be able to host a Pilot Data Server with a different hosting URL than the default one. One use case is to make Pilot Data Server able to work under a reverse-proxy server.
- **BaseUrl:** If the Base URL is set, the host URL is re-written to the Base URL for every response. The Base URL must be an absolute URL string.

 **Note:** Using Base URL overrides the Base Path, if the Base Path is set.

Database Connection

Pilot Data Server can connect to either an Oracle or a Graphic Hub database. Select your preferred choice in the dropdown.

Graphic Hub

- **URL:** Full URL to the Graphic Hub REST service.
- **Username:** Username when Pilot Data Server connects to Graphic Hub.
- **Password:** Password when Pilot Data Server connects to Graphic Hub.

Oracle

- **Data Source:** A connection string with format *hostname/servicename (SID)* to the Oracle database, for example *localhost/vizrtdb*.
- **Username:** Username when Pilot Data Server connects to the Oracle Database.
- **Password:** Password when Pilot Data Server connects to Oracle Database.

4.6.3 Configuring the Pilot Data Server Port

The default Pilot Data Server port is 8177. To change the port:

1. On the Pilot Data Server machine, open the ini file in a text editor: %ProgramData\Pilot Data Server\DataServerConfig.ini.
2. Replace the following setting: *Port = 8177*.

4.6.4 Configuring the STOMP Address

The default STOMP ([Change Notifications API](#)) port is 9876. This is used to form an URL to the STOMP server, sending change notifications to Media Sequencer. This URL is served out as a link in the /changelog end point of Pilot Data Server. Note that this URL cannot be put behind a proxy. The host name of the STOMP server must be accessible from the Media Sequencer host.

- On the Pilot Data Server machine, open the ini file in a text editor: %ProgramData\Pilot Data Server\DataServerConfig.ini.

The STOMP address is built from two parts: The base URL and the port.

Changing the STOMP Address

The STOMP base URL is by default the same as the Pilot Data Server host address. It can be overridden by setting *ChangeServerReportAddress* in the ini file. The default port is 9876. Change this by setting *ChangeServerPort* in the ini file:

```
ChangeServerReportAddress = https://hostname.domain.com
ChangeServerPort = 9988
```

The resulting STOMP URL is `stomp://hostname.domain.com:9988/`.

The STOMP base URL is also implicitly changed by the Pilot Data Base *BaseUrl* setting. For instance:


```
BaseUrl = https://baseurl.domain.com
ChangeServerPort = 9988
```

The resulting STOMP URL is `stomp://basurl.domain.com:9988/`.

5 Use Cases

A Viz Pilot system has the following Pilot Data Server use cases:

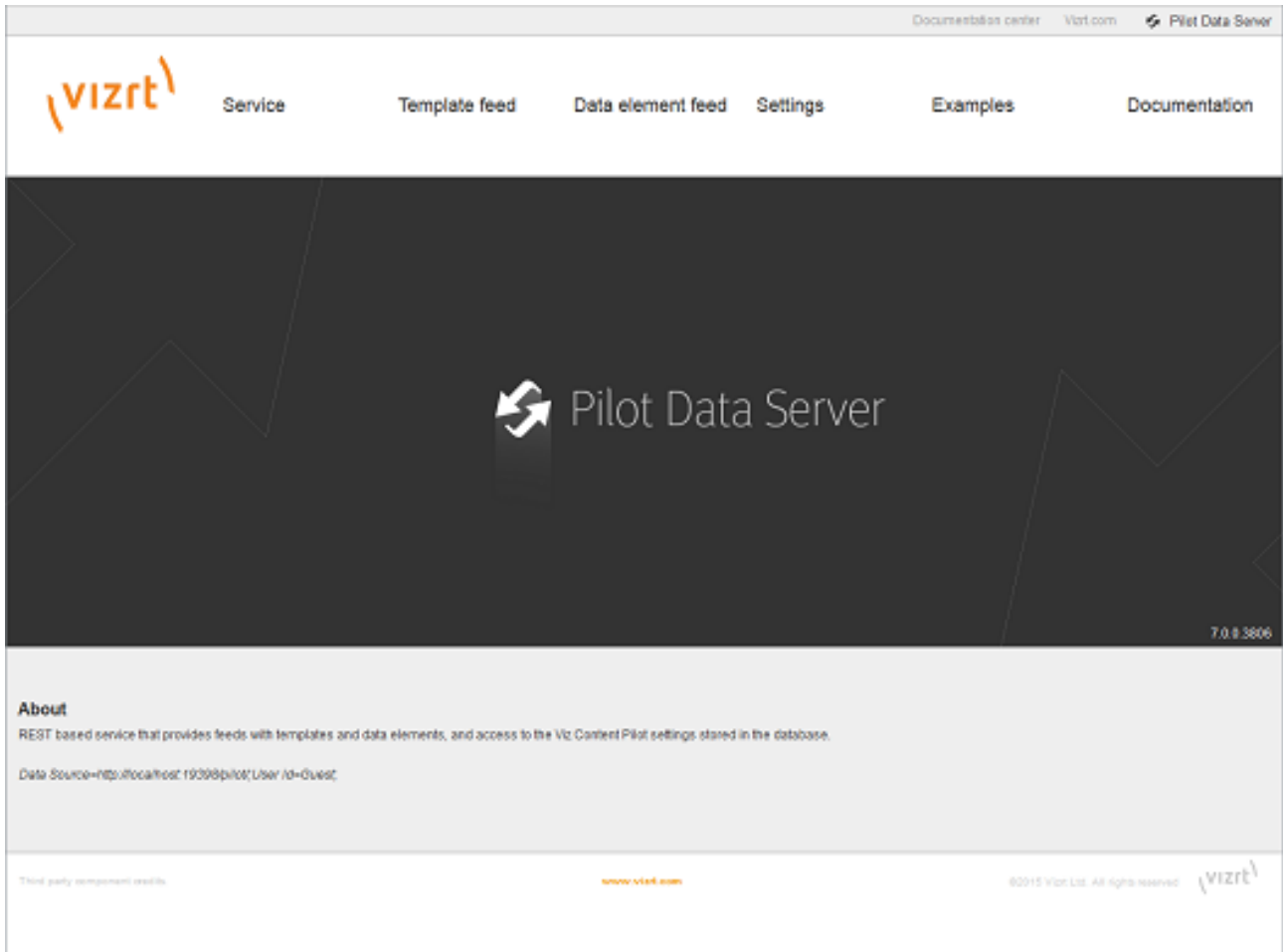
- Using the Timeline Editor. See the Timeline Editor section under Newsroom Integration in the [Viz Pilot User Guide](#).
- Using the Update Service. See the Update Script Editor under Template Wizard in the [Viz Pilot User Guide](#).
- Searching for and using images and videos from Viz One.
- Using the person search from the Media tab.
- Adding and updating [Tag Settings](#). Tags are assigned to templates in Template Wizard, and then used in Viz Pilot News to organize templates.
- Using the Crop Service. See the Using Crop Service section under Crop Service and Crop Tool in the [Viz Pilot User Guide](#).

 **Note:** Crop Service requires a separate installer. See Crop Service Installation in the Installation section in the [Viz Pilot User Guide](#).

- Using the Pilot Data Server's REST API to allow third-party systems to read and fill templates and data elements from the Viz Pilot database.
- Configuring Order Management. See the Order Management section in Newsroom Integration in the [Viz Pilot User Guide](#).
- The Pilot Data Server exposes all the data needed by the Media Sequencer through its REST interface. It also provides [Change Notifications](#) using the STOMP protocol. It's possible to configure Media Sequencer to connect to the Pilot Data Server instead of the Pilot database (this requires Media Sequencer 4.0 or later).

6 Web Interface

The Pilot Data Server web interface offers access to features including the Service Document, Template and Data Element Feeds, Viz Pilot Settings and REST API documentation.



6.1 Accessing The Pilot Data Server Web Interface

- Select the **Pilot Data Server Web Interface** from the Windows Start Menu.
- Alternatively, start the **Pilot Data Server** in a browser, using the host name of the machine running the Pilot Data Server, and port `8177`. For example: <http://dataserver.example:8177>

6.2 Service

The Service Document resource (for example: `http://<dataserver.example>:8177/service`) is an Atom Service Document that can be used by a client to discover the capabilities of a Pilot Data Server and the locations of the available Atom Publishing Protocol collections hosted on it.

6.3 Template Feed

The Template Feed resource (for example: <http://<dataserver.example>:8177/templates>) is an atom feed that contains entries for each template stored in the Pilot Data Server. Metadata may include details of the template such as description, creation date, link to a thumbnail image and link to the Viz Data Format (VDF) model document describing the template.

6.4 Data Element Feed

The Data Element Feed resource (for example: <http://<dataserver.example>:8177/dataelements>) is an atom feed that contains entries for each data element stored in Pilot Data Server. Metadata may include details of the data element such as description, creation date, link to thumbnails and link to the Viz Data Format (VDF) payload document describing the data element.

6.5 Settings

The Settings page (for example: <http://<dataserver.example>:8177/settings>) is used to configure [VCP Parameters](#) and [Tag Settings](#). See [Setting Parameters](#) for a full description of the Settings tab.

6.6 Examples

The Examples page (for example: <http://<dataserver.example>:8177/examples>) contains examples on how to interact with the Viz Pilot system.

6.7 Documentation

The Pilot Data Server Documentation page (for example: <http://<dataserver.example>:8177/help>) describes the REST API provided by Pilot Data Server. The page includes information on the Resource Types and Content Types that are used in the interface. The API itself lets you access template information, perform image search and person search, and provides a programming interface for other systems.

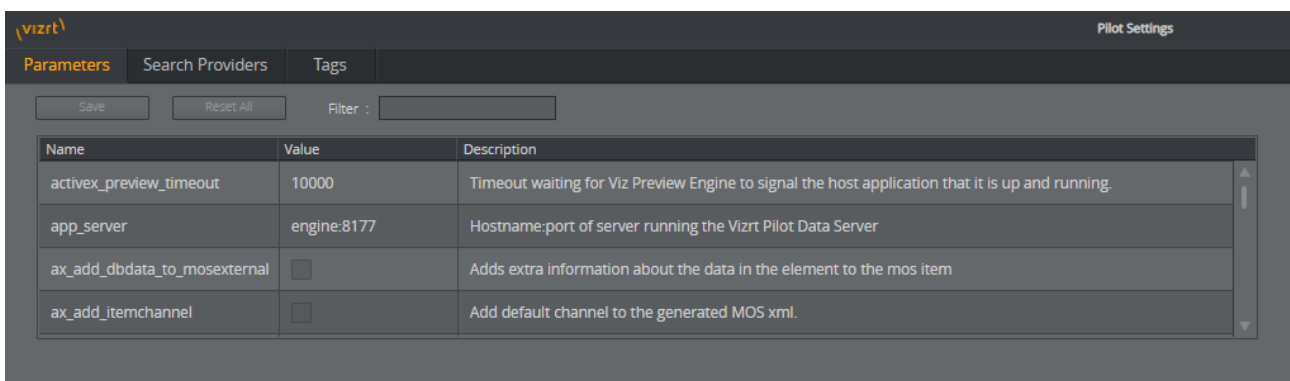
7 Setting Parameters

The **Settings** tab is used to configure the following values:

- [Database Parameters](#)
- [Search Providers](#)
- [Tag Settings](#)

7.1 Database Parameters

Configure Viz Pilot system application settings in the VCP Parameters tab. A description of useful database parameters is listed [here](#).



Name	Value	Description
activex_preview_timeout	10000	Timeout waiting for Viz Preview Engine to signal the host application that it is up and running.
app_server	engine:8177	Hostname:port of server running the Vizrt Pilot Data Server
ax_add_dbdata_to_mosexternal	<input type="checkbox"/>	Adds extra information about the data in the element to the mos item
ax_add_itemchannel	<input type="checkbox"/>	Add default channel to the generated MOS xml.

7.1.1 Granting Applications Access to Pilot Data Server

1. See how [To access the Pilot Data Server Web Interface](#).
2. Click the **Settings** link.
3. Select the **app_server** setting and add the parameter for the machine you installed Pilot Data Server on (for example, <DataServer>:8177).
4. Click **Save**.

This grants all applications with a connection to the database access to Pilot Data Server.

IMPORTANT! Firewalls must allow inbound communications on port **8177**.

7.1.2 Granting Applications Access to Preview Server

1. See how [To access the Pilot Data Server Web Interface](#).
2. Click the **Settings** link.
3. Select the **preview_server_uri** setting and add the parameter for the machine you installed Preview Server on (for example, http://<hostname>:21098). This machine, with Viz Engine and Preview Server installed, is typically identified as your *frame server*.
4. Click **Save**.

This grants all applications with a connection to the database access to Preview Server.

7.1.3 Granting Applications Access to Update Service

Note: This setting is required if templates run scripts that use Update Service.

1. See how [To access the Pilot Data Server Web Interface](#).
2. Click the **Settings** link.
3. Select the `script_runner_uri` setting, and add the parameter for the machine running the Update Service (e.g. `http://<hostname>:1981`).
4. Click **Save**.

This grants all applications with a connection to the database access to Script Runner.

IMPORTANT! If you change the `script_runner_uri` parameter (after setting it the first time), you need to restart Media Sequencer for the changes to take effect.

7.1.4 Setting Database Parameters for Crop Service

1. See how [To access the Pilot Data Server Web Interface](#).
2. Click the **Settings** link.
3. Select the `crop_service_uri` setting and add the parameter for the machine you installed Pilot Data Server on: `http://<cropservicehostname>: 8178/`.
4. *Optional:* Set the `MediaSearch_ItemPerPage` = Number of items per page to get from MediaSearch.
5. *Optional:* Set the `croptool_max_image_area` to adjust the maximum size of a cropped image that is served by Pilot Data Server. If the image size (*) is larger than `croptool_max_image_area`, then the image is resized, while still respecting the aspect ratio of the crop. The maximum image size applies even if no cropping is done.
* Image size = image width x height in pixels.
6. Click **Save**.

7.1.5 Enabling Built-in Object Store Search

The built-in Object Store search is disabled by default. To enable or disable it:

1. See how [To access the Pilot Data Server Web Interface](#).
2. Click the **Settings** link.
3. Select the `disable_built_in_vos_search` setting:
 - To use built-in Object Store search, set `disable_built_in_vos_search` to false.
 - To use RestVOS search, set `disable_built_in_vos_search` to true.
4. Click **Save**.

7.1.6 Configuring Order Management

This procedure assumes that you have a Viz One system installed and running the Order Management system, see the Order Management in the Newsroom Integration section in the [Viz Pilot User Guide](#). For more information on how to configure order management on Viz One, see the Tasks and Order Management section in the Viz One Administrator Guide.

1. See how [To access the Pilot Data Server Web Interface](#).
2. Click the **Settings** link.
3. Select the [order_mgt_uri_template](#) setting and add the address of the Viz One machine which is hosting the order management system, for example:
`http://<fully-qualified-domain-name-of-viz-one>:8084/tasks/?user={user}&locale=en_US&theme=light#create;tl=work_order;form=create_wo_active;asset-type=ITEM;upload=true;external-hooks=viznewsroom;closewin=false;set-attr=REQ_TYPE-{asset_type}`.

7.2 Search Providers

Both Director and Viz Pilot News get their Viz One connection parameters from the Viz Pilot database. Media Sequencer must be configured using your control application. Asset search providers can be set to active or inactive. Disabling a search provider means that it is not used when searching for assets in a template.

This section contains the following topics:

- [Configuring Search Providers \(Viz One\)](#)
- [Configuring Search Providers \(RestVOS\)](#)
- [Authentication for Feed Browser](#)

Pilot Settings

Parameters **Search Providers** Tags

Save Reset All Filter :

Asset search providers

Active	Service Document URL	Label	Description	Status
<input checked="" type="checkbox"/>	http://bgoqavizone1/thirdparty	VizOne	Search Items	OK
<input checked="" type="checkbox"/>	http://engine:8177/service	PDS	ERROR	The remote nan
<input checked="" type="checkbox"/>	http://graphichub:12345	GH	ERROR	The remote nan

Add Delete

Pre-authenticated hosts

Host URL	Username	Password
http://bgoqavizone1	user	*****
http://graphichub:12345	user	****

Add Delete

7.2.1 Configuring Search Providers (Viz One)

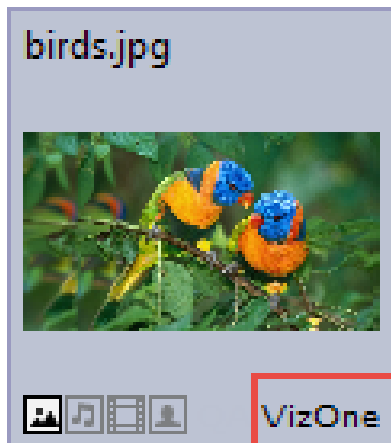
1. See how [To access the Pilot Data Server Web Interface](#).
2. Click the **Settings** link.
3. Click the **Search Providers** link.
4. Under **Asset search providers** click the **Add** button and enter the host's service document **URL**:
 - For Viz One 5.4 and later: `https://<viz_one>/thirdparty/`.
 - For Viz One 5.3: `https://<viz_one>/api/`.

Note: Make sure you enter the correct protocol. For example, a Viz One set up on HTTPS requires an **HTTPS** URL.

5. Add a **Short name** such as *VizOne* to help identify the asset's location, for example in search results.

Note: If you change the short name, you need to restart the server for the changes to take effect (see [To modify the Pilot Data Server database settings](#)).

The screenshot below shows the Search Provider Short Name as displayed in search results:



6. Under Pre-authenticated hosts click the **Add** button and enter the host's URL, username and password in order to authenticate your search:
 - URL of the host, for example: `https://<viz_one>/`.
 - Username and password of the pre-configured user on the Viz One system (configured in the Studio admin web interface).
 - This is required for Viz One (not Object Store).

WARNING! The username and password used here are available in clear text to anyone who has access to the Settings page. The Viz One user entered here should therefore be given as few rights on the Viz One as possible.

7. Click **Save**.

Note: That **Crop Server** also needs a restart after configuring pre-authenticated hosts, as Crop Server uses the settings from Pilot Data Server.

7.2.2 Configuring Search Providers (RestVOS)

By default, Viz Pilot 6.0 and later uses the [RestVOS](#) search, and a search provider representing the current Pilot Data Server is configured automatically. This requires that the correct value (a public name that points to the current Pilot Data Server) has been stored in the [app_server](#) parameter in the [database parameters](#). Changes to this value are picked up during restarts.

The auto-added search provider can be renamed or made active/inactive on the **Search Providers** page. The URI cannot be changed.

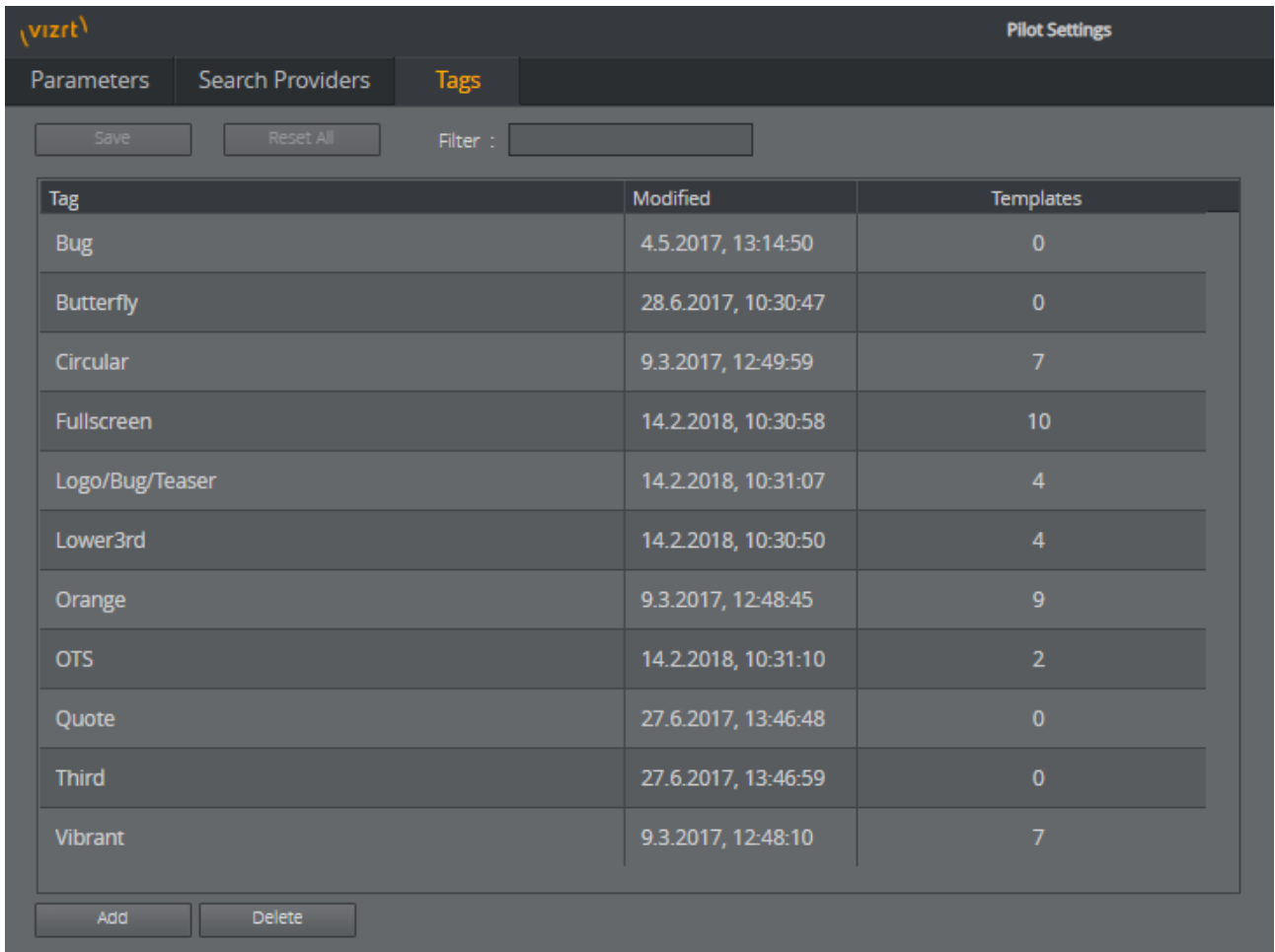
Note: Upgrading from Viz Pilot 5.7 to Viz Pilot 6.0 can result in two search providers with the same URL (both the existing and the new provider). Although the new provider is disabled and therefore does not cause an issue, you can delete the old and activate the new provider if you wish to clean up the list.

Note: If you change the short name you need to restart the server for the changes to take effect.

7.2.3 Authentication for Feed Browser

The Pre-authenticated hosts configured in Pilot Data Server also apply to the Feed Browser when hosted in a Viz Pilot system application (see the Feed Browsing section under Newsroom Integration in the [Viz Pilot User Guide](#)).

7.3 Tags Settings




Tag	Modified	Templates
Bug	4.5.2017, 13:14:50	0
Butterfly	28.6.2017, 10:30:47	0
Circular	9.3.2017, 12:49:59	7
Fullscreen	14.2.2018, 10:30:58	10
Logo/Bug/Teaser	14.2.2018, 10:31:07	4
Lower3rd	14.2.2018, 10:30:50	4
Orange	9.3.2017, 12:48:45	9
OTS	14.2.2018, 10:31:10	2
Quote	27.6.2017, 13:46:48	0
Third	27.6.2017, 13:46:59	0
Vibrant	9.3.2017, 12:48:10	7

The Tags Settings page is used for administering tags. The tags are assigned to templates in Template Wizard, and then used in the newsroom component to organize templates.

7.3.1 Accessing Tags Settings


1. See how [To access the Pilot Data Server Web Interface](#).
2. Click the **Settings** link.
3. Click the **Tags** tab.

7.3.2 Tags Settings Functions

Function	Description
Add tag	Click the Add button and enter a name in the Add a New Tag dialog.
Rename tag	Click a name in the Tag list. Enter a new name and click Save .
Reset changes	Click Reset All to reset changes.
Delete	Click Delete to delete a selected tag. <div style="border: 1px solid #ffc107; padding: 5px; margin-top: 10px;"> Note: Deleting a tag does not delete the templates that refer to that tag.</div>
Filter	Type to filter on tag name.

7.4 Database Parameters

You can access all database parameters from the Pilot Data Server's [VCP Parameters](http://<hostname>:8177/app/DataServerConfig/DataServerConfig.html) page (<http://<hostname>:8177/app/DataServerConfig/DataServerConfig.html>).

 **Caution:** Settings should only be changed by administrators.

7.4.1 Viz Pilot Database Parameters

- **activex_preview_timeout:** Sets the timeout in milliseconds waiting for the Viz Preview Engine connection before continuing. The default value is 10000. Can be overridden by the local registry setting `PreviewTimeOut` (see Registry Settings in [Viz Pilot User Guide](#)).
- **allow_subfield_in_view:** Used client-side to determine if subfields can be added to custom layouts. Should be set to true when using Preview Server 4.4.1 or above, and set to false otherwise.
- **app_server:** Legacy parameter kept for backwards compatibility. Contains hostname:port of the running Pilot Data Server. The parameter `data_server_url` should be used instead.
- **ax_add_dbdata_to_mosexternal:** Adds extra information about the data in the element to the MOS item.
- **ax_add_itemchannel:** Adds default channel to the generated MOS XML.
- **ax_dataelement_timer_enabled:** Sets the default behavior for showing or hiding the Graphic Event Timing options in the newsroom component when Saving an Element. When enabled it shows the timing editor, and when disabled it hides the timing editor. This setting can be overridden by enabling the `ShowGraphicEventTiming` setting for the Template Information Component in Template Wizard on a template by template basis.
- **ax_disable_clear_layers:** This setting disables the clearing of all layers as the first commands sent when sending to preview.
- **ax_disable_data_overwrite:** When enabled, this setting disables the Save button in the newsroom component - only the **Save As** button is then active. This option also de-selects the *Add to Library* checkbox in the Template Save Dialog Box for all saved elements.
- **ax_disable_dragdrop:** When enabled, this setting disables drag-and-drop in the newsroom component. This option is useful when using a newsroom system that does not facilitate drag-and-drop interaction with plugins.
- **ax_disable_media_drag:** When enabled, this setting disables dragging of media from search results to the rundown. This option is de-selected by default - dragging of media from search results is allowed.
- **ax_disable_overlay_saving:** When enabled, this setting disables saving of overlay timelines for clip assets that have an `overlay_timeline` link. When a clip is opened from the media tab there will not be any previously saved graphics on the timeline. Overlay saving is enabled by default.
- **ax_dont_fetch_thumbnails:** When enabled, the newsroom component does not fetch thumbnails for the templates and data elements when they are in list view mode, only in *show icons* view.

- **ax_enable_refresh_button:** When enabled, the **refresh** button in the ActiveX external preview form is shown. The preview will be refreshed without resending the data to the preview server.
- **ax_enableMediaSendToRundown:** When enabled, this setting enables the Add to Rundown option in the media search. This is only useful if the newsroom system does not support drag and drop operations.
- **ax_force_detached_pvw:** This setting forces detached snapshot-preview window in Ax/VCP.
- **ax_hide_data_elements:** This setting hides the data element list in the newsroom component.
- **ax_hide_media_tab:** This setting hides the media tab in the newsroom component.
- **ax_include_mosobj_tag:** This setting adds a mosobj node to the generated MOS XML. This is required for some (Dalet) newsroom integrations.
- **ax_mos_edit_save_returns:** ActiveX checks this parameter to determine if it should return to the template list after saving (when editing).
- **ax_preview_host:** Hostname of the Viz Engine used to generate snapshot-preview images and fetch icons from Viz resources (images/geoms/materials etc.). It's also used as the fallback vizhost for the ThumbnailGenerator. Multiple renderers can be defined as a comma-separated string. For example <host>, <host>, ... or <host>:<port>,<host>:<port>, If hosts are defined without a trailing port number, it's recommended to set the default port in the Port field. If no port number is set, it will default to 6100.
- **ax_preview_img_protocol:** Request snapshots in different image formats.
- **ax_preview_port:** Port of the Viz Engine used to generate snapshot-preview images, and fetch icons of Viz resources (images/geoms/materials etc). It's also used as the fallback vizhost for the ThumbnailGenerator.
- **ax_preview_tl_legacy_support:** When enabled, the preview sends values to legacy transition logic location (\$other\$object) in addition to normal behavior.
- **ax_preview_tl_show_next_sub:** The `\Toggle*continue_noanim` command is used when previewing transition logic.
- **ax_remove_continue_count:** This setting disables the sending of continueCount in mosExternalMetadata.
- **ax_remove_objSlug:** This setting removes objSlug from the generated MOS XML. This is needed when the newsroom component is hosted in AvidCommand.
- **ax_required_version:** The required version of the Vizrt newsroom component for the ActiveX to work. If the newsroom component version is earlier than this, a warning is displayed.
- **ax_savesas_cancels_edit :** Default behavior is: when editing an item already in a script, then clicking **Save As New**, the item in the script is replaced by the new item. Enabling this setting still creates a new graphic but does not replace the original item in the script.
- **ax_show_hints:** Disable this setting to turn off all tooltips in the ActiveX. Tooltips may cause the Dalet newsroom system to crash.
- **ax_showsavechanges_dlg:** This setting asks users if they want to save the currently open data element or template when opening a new one.
- **ax_use_custom_gui_dlg:** This setting embeds Viz Curious Maps Editor (CME) inside the same window as the newsroom component (and is used for this only).
- **clip_default_itemchannel:** If a value is set, the value is used as the default channel for video clips. The value is used in the itemChannel element in the MOS XML and appears in the Viz

Trio playlist and in the NCS. This parameter is empty by default. If a video or timeline element is reopened from the NCS rundown, the itemChannel chosen in the rundown is not reset to default again, even if the element is updated and overwritten.

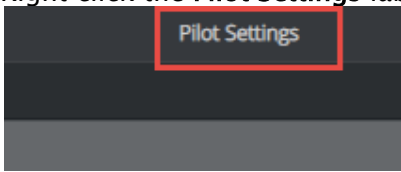
- **compatible:** Version number
- **country_language:** Set the language to use for the country list. English is supported by default.
- **crop_service_uri:** Sets the URL to the image crop service.
- **croptool_max_image_area:** Sets the maximum area of a cropped image in pixels that will be served by the Pilot Data Server. Anything bigger is resized, while still respecting the aspect ratio of the crop. The maximum size applies even if no cropping is done. Image size = width x height in pixels. 0 = disabled.
- **data_server_url:** Hosting URL of Vizrt Pilot Data Server (for example: <http://exampleserver.com:8177>) or the reverse proxy server pointing to Vizrt Pilot Data Server. May contain base path prefix at the end of the base URL (for example: <http://exampleserver.com:8177/pds>).
- **delete_data_from_active:** Enable this setting to allow users to delete data elements from the newsroom component.
- **DELETE_DATA_PASSWORD:** Password protection for data element deletion in the Viz Pilot client. If the value is empty, the delete data elements dialog is not password protected.
- **disable_built_in_vos_search:** This setting disables the built-in VOS search. This should be used to prevent duplicate hits when moving to the new RESTful VOS search.
- **graphic_hub_url:** Host or reverse proxy URL of the Vizrt Graphic Hub API used to provide scenes (for example: <http://exampleserver.com:19398/> .) If needed, it should contain a base path prefix at the end of the base URL, and an explicit port used, if this differs from the default 19398 port (for example : <http://exampleserver.com:80/pilot>.)
- **image_order_uri_template:** Placeholder URL template for image orders.
- **image_share:** Specifies the path the image Crop Tool (for templates) uses when saving a cropped image (<UNC or Windows path>)
- **live_update_interval:** Update service poll interval in seconds. If the **Update at regular intervals while on air** option is enabled for a template with an update script or external update service, the Media Sequencer invokes the update service repeatedly using the interval specified here. The minimum value is two seconds.
- **MediaSearch_itemPerPage:** The value should correspond to Media Search Items per page.
- **model_uri_template:** URL template for the Pilot App Server to get the model document for a template given by its database ID. It is used by the Maps Preview Server, as well as certain external systems. Do not change this value.
- **moseditor_arc_url (optional):** The URL to a Viz Arc MOS plugin panel. This panel will appear in Viz Pilot Edge if it is configured.
- **moseditor_arc_schema (optional):** The unique qualifier string to identify the Viz Arc MOS plugin editor when reopening Viz Arc MOS items from the newsroom system. The default value is *http://www.vizrt.com/mosObj/vizarc/action*.
- **moseditor_arc_label (optional):** The title of the Viz Arc MOS plugin tab in Viz Pilot Edge. The default value is *Arc Actions*.

- **mos_override_objtb (optional):** Decides the value to be served out for the <objTb> tag in the MOS XML from Pilot Data Server. This value is normally 50 or 60, setting it to 0 will break timing info in Playout Instructions.
- **mos_override_objtype (optional):** Decides the value of the <objType> tag in the MOS XML for Pilot graphics elements served out from Pilot Data Server. This value is PILOT per default.
- **mos_override_objdur (optional):** Decides the value of the <objDur> tag in the MOS XML for Pilot graphics elements served out from Pilot Data Server. This value is 1 per default.
- **mse_script_runner:** This setting can be used to set a different script runner for the MSE. Normally not needed. The default value is blank.
- **order_mgt_uri_template:** URL template used to invoke the order management form.
- **payload_uri_template:** URL template for use with the Pilot App Server to get the payload document for a data element given by its database ID. It's used by the timeline editor in the newsroom ActiveX as well as certain external systems. Do not change this value.
- **preview_server_uri:** Base URL to the Preview Server used when requesting preview images in the timeline editor (for example: <http://exampleserver.com:54000>). This value is read by the Pilot App Server and published in its service document.
- **schema_build:** Minor build version of the database schema. Do not modify.
- **schema_version:** Major version of the database schema. Do not modify.
- **script_runner_uri:** The URL to the script runner that executes *update scripts to data/payloads*.
- **shared_curious_server:** Sets the Viz World Server IP or hostname for maps. In a multi-server setup, use comma-separated IP/hostnames.
- **show_playlist_element_index:** This setting shows a column in the VCP playlist that displays each item index in the list.
- **slim_mos_xml:** This setting reduces the MOS XML by removing optional tags.
- **spellcheck_dict_filename:** Sets the filename for the dictionary file (*.dic*) and affixation file (*.aff*) for the spell checker. This parameter is mandatory and is *en_US* by default. For example, if *spellcheck_dict_filename* is set to *my-special-en_US*, then the spell checker looks for the two files *my-special-en_US.dic* and *my-special-en_US.aff*. Several spell checking dictionaries are included in the Viz Pilot system installation. The dictionaries are installed in the default location: *%ProgramFiles(x86)%\vizrt\Common\dicts*. Other dictionaries can be downloaded from [OpenOffice](#), however, these must be UTF-8 formatted. Contact your local Vizrt representative if you need to convert and use another dictionary for spell checking purposes.
- **spellcheck_dict_path:** Sets the path to the dictionary files for the spell checker. By default, this parameter is empty, which means the default location is used (*%ProgramFiles(x86)%\vizrt\Common\dicts*). If the files are not located under the default location, use a full path, mapped drive or UNC path.
- **timeline_update_service:** The service document URL for the Timeline Update Service.
- **vcp_schema_name:** For example, PILOT.
- **video_mode:** Video mode for channel. PAL or NTSC.
- **VOS_PASSWORD:** Shows the encrypted version of the VOS password. As this setting contains the encrypted version, it should not be set here, but rather be set using the VOS change password dialog. Setting this to blank disables password protection for VOS settings.

- **vtw_disable_unique_name_check**: Used if you need to save different templates in different concepts with the same name - if you are not using the Template Manager to link several scenes to the same template, but are instead creating several templates. This could be due to incompatible scene structure or similar.
- **vos_allow_edit_from_dll (optional)**: Enables or disables the toolbar in Object Store. When disabled, it prohibits registering and editing of images and person information when Object Store is used with Viz Pilot News and Template Wizard. This option can be added to the database. Values are *Y* for allowing edits and *N* for prohibiting edits.

Add Optional Database Parameters

1. Right click the **Pilot Settings** label to the right of the Settings window:



2. Click **Add New Optional Parameter**.
3. Enter the key as specified above for optional parameters, a value and a description.

8 RestVOS

8.1 Comparing RestVOS And Conventional VOS Access

- The fundamental difference is in the protocol used to search for images and deliver the results to the client.
 - When accessing an Object Store in the conventional Viz Object Store (VOS) way, the client application goes directly to the database and the network share in order to get the data.
 - When using RestVOS, the client accesses the same images and storage, but via the Pilot Data Server. This uses the HTTP protocol, the same protocol used when talking to Viz One systems.
 - From the point of view of client applications, accessing RestVOS is no different from accessing a Viz One or any other asset search provider.
 - The existing Object Store (see the Object Store section in the [Viz Pilot User Guide](#)) application is used to manage the images and storage, whether using standard VOS or RestVOS.
-

8.2 Advantages Of RestVOS

- **Flexibility:** HTTP is an easier protocol to use and manage. By using the Pilot Data Server and the OpenSearch protocol, other applications can also perform the same searches, and there is no need to make the network share available on all clients.
- **Extended features:** Certain features such as Crop Service and Filter Media by Person Name (see the [Viz Pilot User Guide](#)), are only available when using RestVOS.
- **Future oriented:** As development on RestVOS continues, features such as load balancing and failover capabilities will be added, which will benefit image transfers. Once direct database access from Viz Pilot News is no longer required, management of Oracle clients will not be needed. Conventional access to VOS will be phased out at some stage.

9 Change Notifications

Change notifications are available through the REST API and the STOMP protocol on Pilot Data Server.

9.1 REST API


A list of database changes ordered from most recent to oldest:

- Located at <http://pdshost:8177/changelog>.
 - Parameters:
 - **startId**: The ID of the least recent change, or -1 for no limit. Default is -1.
 - **lastKnownId**: The ID of the most recent change, or -1 for no limit. Default is -1.
-

9.2 STOMP API

In a Viz Pilot system, the text-based message Streaming Text Oriented Messaging Protocol (STOMP) is used to subscribe to change notifications from Graphic Hub REST and Pilot Data Server. STOMP provides push notifications of new changes.

- Located at: `stomp://pdshost:9876/?destination=/changelog&lastKnownId=-1`.
- Parameters:
 - **lastKnownId**: Mandatory, should be the ID in the STOMP link that is provided by the REST API. For example, when the data stored in the Pilot database changes, a message is delivered to all of the STOMP clients that are subscribed to the server.

 **Note:** The default change notification port for the STOMP protocol is `9876`. Other services using this port may suppress the change notifications.

10 Proxy Support

Pilot Data Server can be installed along with a proxy/reverse-proxy server. The proxy server must either populate the `X-Forwarded` headers or the `Forwarded` header in order for Pilot Data Server to serve the appropriate hostname, port and protocol in its responses:

- `Forwarded`
- `X-Forwarded-Host`
- `X-Forwarded-Port`
- `X-Forwarded-Proto`

Use a proxy server with the above headers configured. If the `Forwarded` or `X-Forwarded` headers are not configured, then the proxy server must be configured to pass the `Host` header it received from the client to Pilot Data Server.

10.1 Redundancy And Failover

Although Pilot Data Server has been designed without built-in redundancy, it does support being used with off-the-shelf third-party HTTP load balancers. As the name suggests, a load balancer's main function is to distribute requests among multiple servers. Multiple servers provide redundancy, and most load balancers come with an option to only route requests to servers that respond, which provides failover.

Both Barracuda Load Balancer ADC and HAProxy have successfully been used in front of Pilot Data Server.

10.1.1 Load Balancer Quick Setup

Quickly set up a HAProxy load balancer:

Prerequisites

- Two (or more) hosts running Pilot Data Server, connected to the same database. They have host names *pds1.example* and *pds2.example* for the purpose of these instructions. Static IP addresses may be used instead.
- A Linux host that turns into a load balancer. It has the host name *proxy.example* for the purpose of these instructions. This is the host used in the installation steps below.

Installation Steps

1. On the Linux host, install HAProxy with the command `sudo apt-get install haproxy`.
2. Edit `/etc/haproxy/haproxy.cfg` (for example with `sudo nano /etc/haproxy/haproxy.cfg`) and append the following lines:

```
frontend http-in
  bind :8177
  default_backend servers

backend servers
  server server1 pds1.example:8177 check
  server server2 pds2.example:8177 check

listen stats
  bind :80
  mode http
  stats enable
  stats uri /
```

3. Restart HAProxy with the command `sudo service haproxy reload`.

Notes

- After following the steps above, it should be possible to use *proxy.example:8177* in place for *pds1.example:8177* and *pds2.example:8177*. Check whether the setup works by opening <http://proxy.example:8177/> in a browser. The Pilot Data Server index page should load.
- The above configuration also provides a monitoring page at <http://proxy.example/> that shows which Pilot Data Server hosts are responding. This does not tell you whether Pilot Data Server is working correctly, as hosts still respond when they cannot reach the database.

11 MOS XML

The MOS (Media Object Server) protocol is a communication standard specifically designed for newsroom computer systems (NRCS) in the broadcast industry. It enables interoperability and seamless integration between various software, devices and plugins used within a newsroom environment. It is important to note that while the MOS protocol provides a standard framework for communication, the specific implementation and feature set may vary between different vendors and systems.

From Viz Pilot Edge 3.0 and Pilot Data Server 9.0, our philosophy in Vizrt is to use these guidelines for how to implement certain parts of the MOS protocol:

1. We want to be as compliant as possible to the [MOS protocol version 2.8.5](#).
2. Where the protocol specification is vague or inadequate, we try to stick to the MOS XML values of existing released Vizrt software.
3. We want to be as internally consistent as possible between Viz Pilot News, Viz Pilot Edge and Pilot Data Server.

The following MOS XML values can be used by newsroom vendors and other consumers as a guide:

Info: Please note that the value 50 below depends on the **video_mode** setting in Pilot Data Server, being 50 for PAL and 60 for NTSC.

The value for **<itemEdDur>** and **<itemEdStart>** are given in frames. **<objTB>** is given in frames per second and should be used to calculate the duration in minutes and seconds.

11.1 Graphics With No Timing Info

	Viz Pilot News 8.9 plugin	Viz Pilot Edge 3.0 / PDS 9.0
<objType>	PILOT	PILOT
<objTB>	0	50
<objDur>	1	1

11.2 Graphics With Timing Info

	Viz Pilot News 8.9 plugin	Viz Pilot Edge 3.0 / PDS 9.0
<objType>	PILOT	PILOT
<objTB>	50	50
<objDur>	1	1

<itemEdDur>	250	250
<itemEdStart>	50	50

11.3 Videos

	Viz Pilot News 8.9 plugin	Viz Pilot Edge 3.0 / PDS 9.0
<objType>	PILOT	VIDEO
<objTB>	50	50
<objDur>	298	298

11.4 Stillstore Images

	Viz Pilot News 8.9 plugin	Viz Pilot Edge 3.0 / PDS 9.0
<objType>	PILOT	STILL
<objTB>	0	0
<objDur>	1	1

11.5 Overriding MOS XML Values

For backwards compatibility with existing newsroom system implementations, it is possible to override some of these values when served out from Pilot Data Server and using Viz Pilot Edge. This should only be done to overcome potential critical issues when upgrading Viz Pilot Edge or Pilot Data Server, and not be a permanent solution. These are the database parameters that can be overridden:

`mos_override_objtype`

`mos_override_objtb`

`mos_override_objdur`

See [Database Parameters](#) on how to add optional database parameters.